



# LEEGOO BUILDER

*enterprise edition*

The consistent proposal system with product configuration, proposal calculation and document generation

The flexibly adaptable standard software for Windows®

## Deployment areas

Mechanical engineering and all types of configurable systems of companies in all markets and sizes



Proposal creation and product configuration  
consistent - fast - accurate - transparent - safe

# Fast response to enquiries ...

**LEEGOO BUILDER** coherently supports the entire spectrum of working methods applicable to the creation of proposals.

The tree structure can be built using different working methods, e.g. by using product configurators (Figures 1 and 2) but also by using a free configuration for the implementation of special requirements (Figure 3).

The proposal calculation is completely consistent with the configuration and is built in a company-specific manner (Customising the standard, Figure 4). Following the proposal calculation, document generation can take place directly as one coherent process (Figure 5).

The coherence of the entire proposal process based on a multi-user capable, database-supported and globally deployable solution is the key to improved efficiency, error avoidance and faster proposal handling as well as time savings in tangential areas.

With **LEEGOO BUILDER** you will achieve transparency and comprehensibility of the configured and calculated plant equipment. The system's sophisticated "Change Management" always provides an answer to the question **WHO** changed **WHAT** and **WHEN** in the proposal.

## » Working methods for the proposal creation

- Product configuration and product logics
- Manual selection from so-called price lists
- Similarity principle (copy and adapt)
- Mixed application of these working methods
  - » **Major steps in the application**
  - Clarify, capture customer requirements
  - Create configurations (technical solution)
  - Multi-currency proposal calculation
  - Generation of multilingual output documents
  - Order data transfer to ERP (optional)

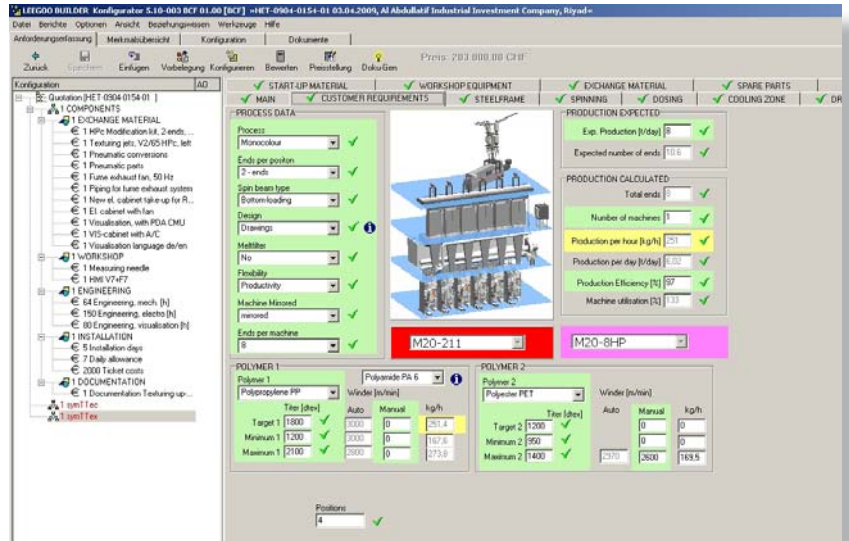


Figure 1: Product configurator with relationship knowledge (Source: SwissTex AG)

Product configurators based on basic customer requirements (Figure 1) support the correct requirement acquisition and clarification, the right choice of machine type and its configuration down to the last detail.

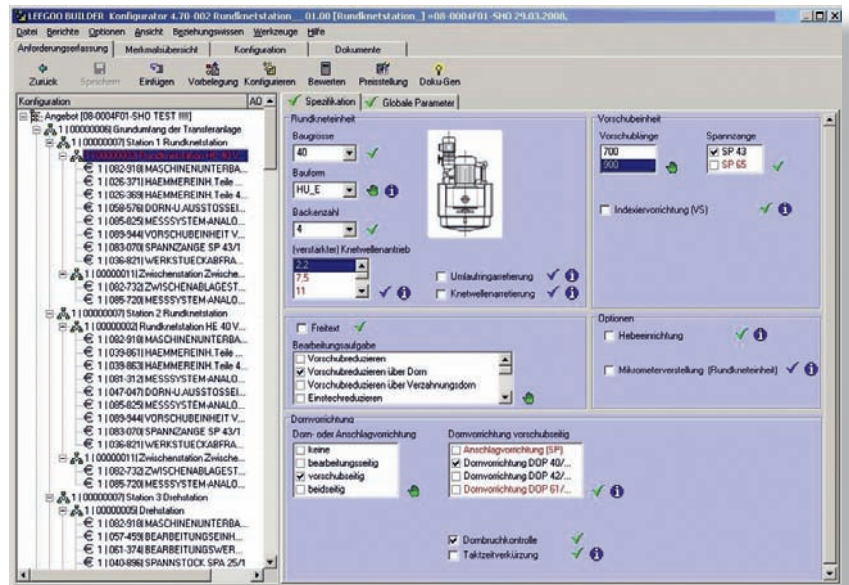


Figure 2: Configurator for rotary kneading stations (Source: FELSS GmbH)

Product configurators can be defined in multiple layers (modular design) so that a configurable system, in this example a rotary kneading transfer line, can comprise reconfigurable subsystems, in this example stations. The proposal calculation can be performed within seconds at the push of a button.

... and you stay ahead of the competition  
by that vital margin!

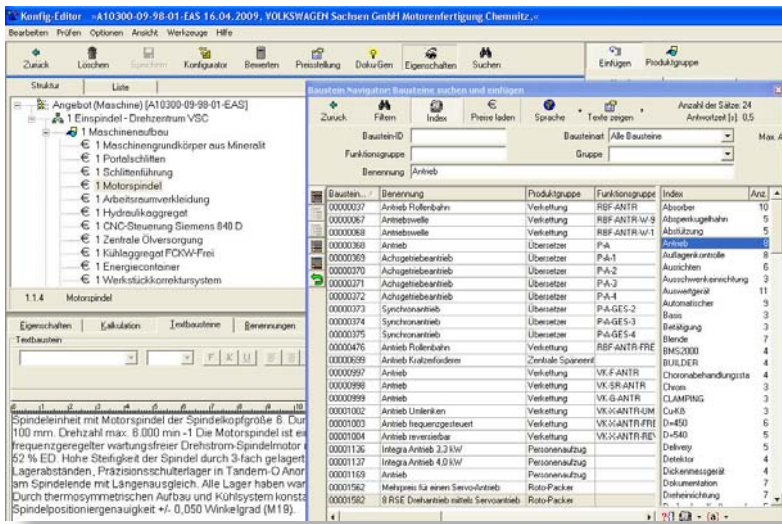


Figure 3: Configuration Editor for manual-interactive processing

Depending on the relevant privileges, proposal items can be manually inserted and amended in the Configuration Editor, e.g. in order to implement special customer requirements that are not part of the product logic.

Figure 4: Tree structure with sample calculation columns in a proposal calculation (company-specific definition)

Figure 5: Automatic generation of multilingual proposal documents

## » Configuration of product variants

- Using the product configurators' configuration logic
- Dialog-based, flexible selection from "building blocks" or "price lists" (manual-interactive by drag & drop)
- Adoption from existing proposals
- Free configuration of proposal items for special requirements

Powerful product configurators offer ease of build and efficient use. The automated configuration then uses the relationship knowledge embedded in the configuration logic.

The configuration of delivery and service scopes can be done manually based on the "building blocks" or the so-called "price lists" that are stored in the system as base data.

The "building blocks" that make up a configuration can comprise price data and multi-lingual text modules. The representation of price data is supported by a validity concept.

## » Configuration logic

The EAS configuration tool enables your experts to set up and maintain comprehensive configuration rules without any programming – the learning process takes just a few days. User interfaces can be designed within a short period of time. The company's product knowledge is captured, represented and utilised for the proposal creation in a structured manner. This safeguards the company's knowledge base and makes it more widely accessible and easy to apply. The same is true for the mobile use on business trips.

## » Proposal calculation

The support of proposal calculation and sales pricing as a primary function offered by LEEGOO BUILDER is equally consequent as that for the various product configuration options.

## » Generation of results documents

A coherent system right through to the texts!

- Integrated text generation and text processing
- Modular proposal documents from selectable chapters
- Illustrated text modules for improved expressiveness
- Configuration features in text modules enable dynamic specifications without data redundancy
- Customer-specific data export to freely designable Excel sheets, e.g. spreadsheet, profit and loss calculation, analyses, reports and much more

The use of LEEGOO BUILDER facilitates modularisation and product standardisation in proposal processing

# LEEGOO BUILDER

## Proposal creation

coherent proposal process

## Product configuration

Variant configurator    Customer requirements  
Product knowledge    Customer view

## Product building blocks

Product standards

## calculation system

Modularisation

## Proposal calculation

## Project calculation

Value-added calculation

## Document generation

## Sales information

Analyses    Reports

## CRM integration

## ERP integration

Order data transfer

## SAP® interface

**EAS Engineering Automation Systems GmbH**  
Zum Rüsperwald 40  
D - 57399 Kirchhundem (NRW)

Phone: +49 (0) 2723 - 717893  
Email: [info@eas-solutions.de](mailto:info@eas-solutions.de)  
Web: [www.eas-solutions.de](http://www.eas-solutions.de)

## Support for task types

assemble to order (ATO)

engineering to order (ETO)

make to order (MTO)

pick to order (PTO)



A member of VDMA