



LEEGOO BUILDER

engineering edition

The consistent project engineering solution with product configuration, proposal calculation and document generation

The flexibly customisable standard software for Windows®

Application areas

Project engineering for machines, plants and turnkey projects in plant and large-scale plant engineering



Project engineering and proposal preparation
consistent - fast - accurate - transparent - safe

Support for project engineering and project calculation ...

LEEGOO BUILDER consistently supports the entire spectrum of working methods applicable to plant project engineering.

Tree structures of scopes of supply and services, sub-divisible to any depth, represent bills of quantities. A tree structure can be built with different working methods, e.g. with product configurators (Figure 1 and 2), but also by a free arrangement as well as by reference projects (Figure 3).

A project calculation scheme with a bill of quantities as input for calculation is set up company-specifically (Customising with standard functions, Figure 4). Following the proposal calculation, document generation can take place directly and in multiple languages in one consistent process (Figure 5).

The consistency of the entire proposal and project engineering process on the basis of a multi-user capable, database-supported and globally usable application is the key to improved efficiency, error avoidance and acceleration in plant project engineering.

With LEEGOO BUILDER you ensure transparency and comprehensibility for the projected and calculated plants. The system's sophisticated "Change Management" always provides an answer to the question WHO changed WHAT and WHEN in the project.

» Working methods in project engineering

- Product configuration with product logics
- Manual selection from so-called price lists
- Similarity principal through reference projects
- Mixed application of these working methods

» Main steps during project engineering

- Clarify and capture customer requirements
- Formulate the draft solution (basic engineering)
- Set up bills of quantities / scopes of supply
- Proposal calculation for commercial evaluation
- Generation of multilingual output documents
- Order data transfer to ERP (optional)

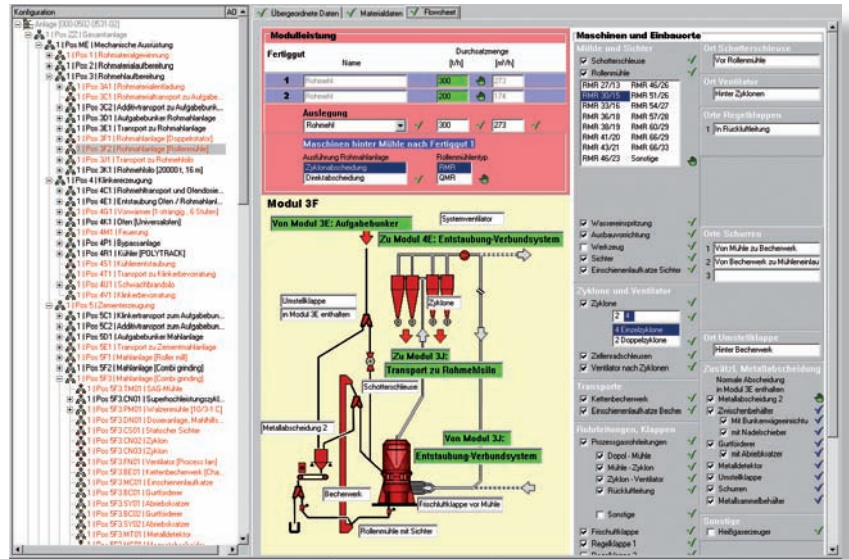


Figure 1: Configurator with variable process diagram for raw mill plants as components of a cement factory (Source: Polysius AG)

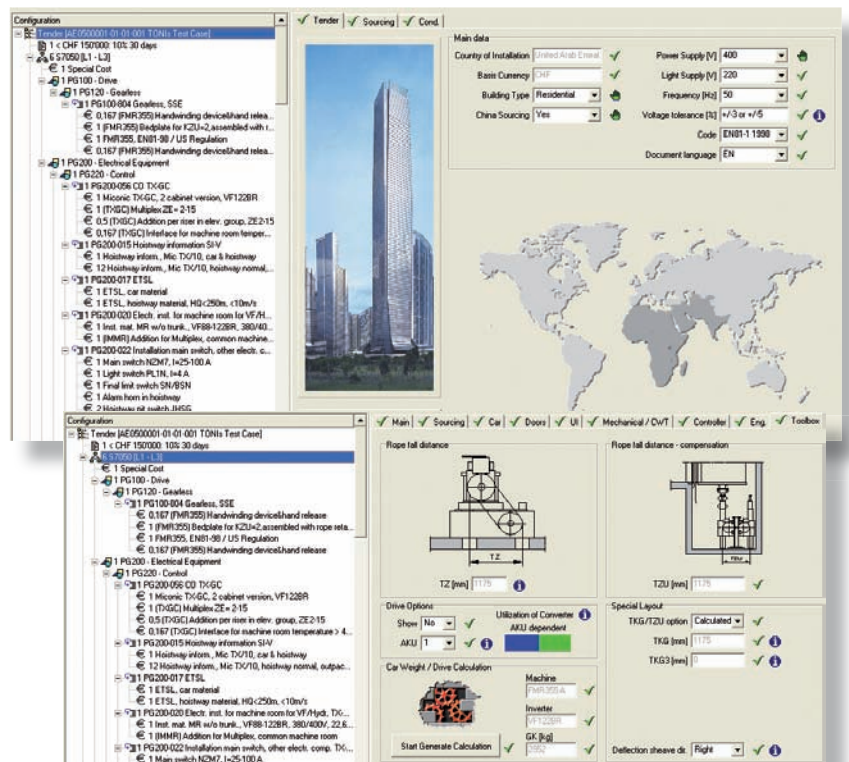


Figure 2: Configurator for high-rise building elevator systems (Source: Schindler Elevator Ltd.)

... consistently and transparently for plants and turnkey projects!

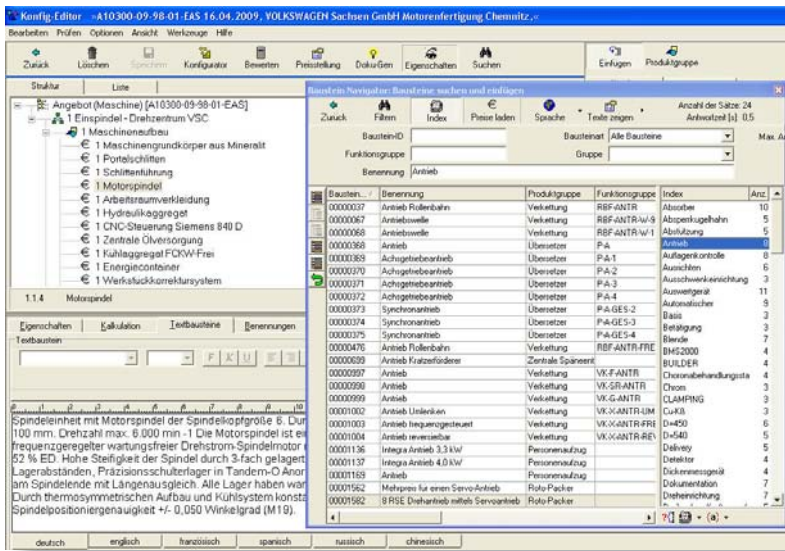


Figure 3: Configuration Editor with tree structure and insertion dialog for the manual-interactive processing of proposal items

» Capture customer and project requirements

- Earlier and more accurate clarification of customer requirements
- Complete, correct, comprehensible capture of product data

» Define scopes of supply and services

- Process bills of quantities including weights, costs, hours, etc. as calculation base data
- Optional use of product configurators and logics
- Bill of Quantities, Scope of supply, Split-Up and others
- Differentiation of standard, adaption, special design can be relevant for project calculation

The product tree structure can also be configured by adopting and adjusting existing project data (reference project). In addition, the interactive access to the "typified building-block world" of the project engineering master data is also possible (standard assemblies). Optionally, product configurators can be used for the logic-based configuration of specific equipments. Configurators can also be successfully used in plant engineering!

» Project engineering of bills of quantities

The Configuration Editor is a tool for the interactive processing of the tree structure and the item data such as quantities, weights, costs, hours as well as multilingual proposal texts and other aspects.

It is also possible to create a customer breakdown, in the sense of a structured inquiry (tender), so that the calculation results for the customer inquiry items are generated.

» Proposal calculation and profit calculation

LEEGOO BUILDER ensures a coherent proposal calculation on the basis of bills of quantities. The mapping of calculation master data and the calculation scheme will be customised using standard functions during the implementation of the LEEGOO BUILDER system.

1	2	32	33	34	35	36	37	38	39	40	41	42	43	44	45	46
Material	Konstruktion	Fertigung	Montage	Umbauführung	Service	Montage	Service	Montage	Service	Montage	Service	Montage	Service	Montage	Service	Montage
EUR	EUR	EUR	EUR	EUR	EUR	EUR	EUR	EUR	EUR	EUR	EUR	EUR	EUR	EUR	EUR	EUR
1.1	1.1.1	1.1.1.1	1.1.1.1.1	1.1.1.1.1.1	1.1.1.1.1.1.1	1.1.1.1.1.1.1.1	1.1.1.1.1.1.1.1.1	1.1.1.1.1.1.1.1.1.1	1.1.1.1.1.1.1.1.1.1.1	1.1.1.1.1.1.1.1.1.1.1.1	1.1.1.1.1.1.1.1.1.1.1.1.1	1.1.1.1.1.1.1.1.1.1.1.1.1.1	1.1.1.1.1.1.1.1.1.1.1.1.1.1.1	1.1.1.1.1.1.1.1.1.1.1.1.1.1.1.1	1.1.1.1.1.1.1.1.1.1.1.1.1.1.1.1.1	1.1.1.1.1.1.1.1.1.1.1.1.1.1.1.1.1.1

Figure 4: Tree structure with sample calculation columns in the project calculation view (customisable to specific customer requirements)

» Generation of results documents

A consistent system right through to the texts!

- Integrated text generation and text processing
- Modular proposal documents from selectable chapters
- Illustrated text modules for improved comprehension
- Configurator attributes in the text modules enable dynamic specifications without data redundancy
- The data export to freely designable Excel sheets, e.g. for bills of quantities, spreadsheets, profit calculations, scopes of supplies, split-up of engineering & services, and many more, is implemented in a customer-specific way.



Figure 5: Documents for proposals, contracts, specifications and much more are generated in multiple languages, e.g. also in Chinese

The use of LEEGOO BUILDER facilitates modularisation and product standardisation in proposal processing

LEEGOO BUILDER

Plant project engineering

Proposal preparation

Customer requirements

Project business

Product configuration

Product standards

Bills of quantities

Product knowledge

Product structures

Building block systems

Modularisation

Reference projects/Sample solutions

Proposal calculation

Project calculation

Profit calculation

Document generation

Sales information

Analyses Reports

ERP integration

Order data transfer

SAP® interface

Exemplary results documents

Multilingual proposal documents

Bills of quantities

Delivery split (Devision of supply)

Procurement specifications for inquiry, buy-in

Spreadsheets for profit calculations

EAS Engineering Automation Systems GmbH

Zum Rüsperwald 40

D - 57399 Kirchhundem (NRW)

Phone: +49 (0) 2723 - 717893

Email: info@eas-solutions.de

Web: www.eas-solutions.de



A member of VDMA